



care on time

## our mission

Is to positively impact healthcare worldwide through the use of our telemedicine solutions and collaboration with healthcare systems.

## our telemedicine technology

We partner with leading telemedicine technology companies

We are constantly developing innovative new technologies to offer world-class healthcare globally.

Our next-generation VeeMed Cloud-based technology enables more convenient patient-doctor communication

## what is VeeMed?

VeeMed partners with your physicians and clinical staff to support the delivery of care to your patients, right in their hometown hospital using the most innovative telemedicine technologies.

## why choose VeeMed?

- Best pricing in the industry
- Proven best quality outcomes
- 24/7 operational & clinical support
- Simple, reliable, integrated solutions
- Optimal physician and staff satisfaction
- Most innovative telemedicine technology solutions
- Optimal patient engagement and satisfaction results
- Telemedicine experienced, board certified physicians

## get in touch today

770 L Street, Suite 950  
Sacramento, CA 95814

+1(866) 377-6260  
+1(916) 492-6022

info@veemed.com  
www.veemed.com



## teleneurology/stroke

VeeMed provides stroke care management services in a timely fashion for patients affected by acute stroke. In addition, VeeMed provides decision support for neurology assessments. Services are available for the ED and In-patient settings.



## telebehavioral health

Patients, who present in the Emergency Department (ED) with behavioral health issues often encounter long delays before being evaluated, admitted, transferred or discharged. Telebehavioral health services have the potential to provide appropriate care quickly and cost effectively. VeeMed's Telebehavioral health Program improves care of the behavioral health patient in the ED. This service can also be provided in the In-patient setting.



## teleintensive care

TeleICU Round & Respond Model includes a TeleICU physician (Teleintensivist) "rounding" twice a day on the partner site's ICU patients, coordinating care with the physician of record, nursing, ancillary staff and family and "responding" to sudden changes in patient condition (within five minutes of notice).



## telehospitalist

Using state-of-the-art technology, Telehospitalists can communicate with patients and support the clinical care team providing 24/7 access to hospitalist assessments, admission orders and treatment recommendations. Telemedicine also provides a highly efficient solution to hospitals in need of night coverage hospitalist services (nocturnist).

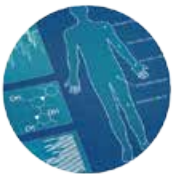


## teleradiology

Teleradiology is the transmission of digitized, medical patient images. We offer the following telemedicine services for X-Rays, CT-scans and MRI scans:

**Routine:** interpreted/reported within 2 hours of receiving the study

**Stat:** interpreted/reported within 45 minutes of receiving the study



## remote patient monitoring

The Remote Patient Monitoring Program is designed to strengthen the connection between healthcare professionals and patients to help make effective virtual care coordination possible. This program effectively addresses the fundamental needs of patients who want more independence and control over chronic conditions, as well as the needs of the healthcare Providers who treat them plus caregivers and family who support them.

VeeMed currently focuses on some of the most challenging chronic conditions – including CHF, COPD, Cancer Care and Diabetes – but it also offers an extensible framework that can be customized for many other conditions.